



HardyBerm Railroad Locomotive Washdown Containment Berm

Capture dirt, grease, and residual oils from locomotive washdowns with flexible HardyBerm Railroad Locomotive Washdown Containment Berms.

These portable berms fit between tracks and hug outer rails to collect both water and residuals that would otherwise foul your ballasts.

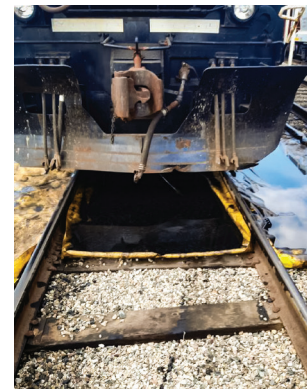
Designed to hold more than 700 gallons, these berms can be secured to rails to prevent shifting and keep washwaters contained until you're ready to pump off the water for recycling.

When the job is done, the sidewalls of the berm can be quickly removed, and the containment berm can be rolled up for compact storage.



★ KEY FEATURES

- ✓ Deploys quickly
- ✓ Captures wash water, silt, sediment and oil
- ✓ Helps to prevent fouled ballasts
- ✓ Stores compactly



Product Number	Application	Size	Capacity (gal)	Magnets	Sold As
BERM465-RRO	Outer Rail (Field)	4.5' W x 65' L x 4" H	725	One Side	Each
BERM465-RRC	Center Rail (Gauge)	4.5' W x 65' L x 4" H	725	Two Sides	Each
BERM480-RRO	Outer Rail (Field)	4.5' W x 80' L x 4" H	892	One Side	Each
BERM480-RRC	Center Rail (Gauge)	4.5' W x 80' L x 4" H	892	Two Sides	Each

